



Mauldeth Road, Withington, M20

Asking price £825pcm

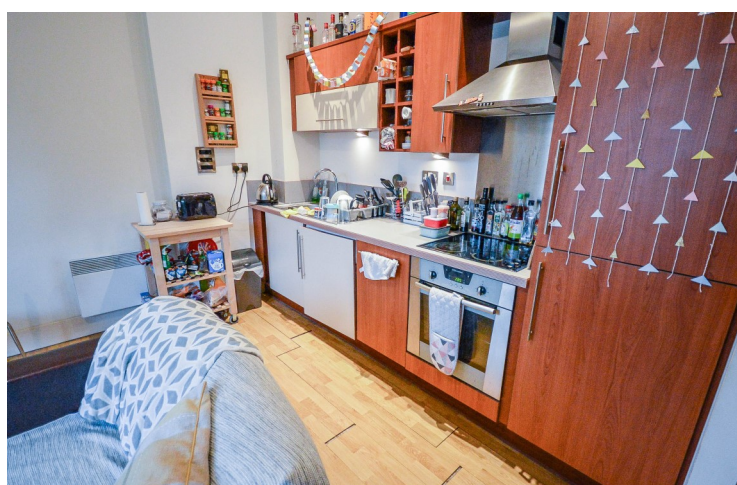




# Property Features

---

- Two Double Bedrooms
- Allocated Parking
- Gated Residence
- Two Bathrooms
- Open-plan Lounge-Diner
- Well Located for Transport Links
- Beautiful Period Property
- Available 26th April



# Full Description

---

Two double bedroom period apartment. The property offers high ceilings, large sash windows and is located within a stunning period property. The apartment offers two bathrooms (en suite to master bedroom and main bathroom); allocated parking space and open-plan lounge-diner.

This property is available from the 26th of April 2020.





## **LOUNGE-DINER 14' 6" x 16' 4" (4.42m x 4.98m)**

The lounge-diner is a bright and spacious room with bay windows to the front aspect. The room offers laminate wood effect flooring; three uPVC double glazed sash windows with fitted blinds; TV and telephone point; electric radiator and door to entrance hall. This room comes with two two seater sofas; glass coffee table and dining table; free-standing up lighter and TV stand.



## **KITCHEN**

The kitchen is open to the lounge area. This kitchen offers fitted base and eye level storage units; with integral dish washer; washing machine; fridge-freezer; four ring electric hob, with oven under and stainless steel extractor fan over; there is also a stainless steel sink unit with chrome mixer tap over.



## **MASTER BEDROOM 13' 5" x 9' 1" (4.10m x 2.79m)**

The master bedroom offers a bright and spacious room with large bay window to rear aspect with fitted blinds; laminated wood flooring; and doors to entrance hall and access to en suite shower room. The room comes with double bed, wardrobe; bedside tables and chest of draws.

## **EN SUITE BATHROOM**

En suite shower room offers shower with glazed bi-folding door and chrome thermostatic shower system; pedestal hand wash basin; low-level WC; chrome heated towel rail; wall mounted mirror; shaving point and fully tiled walls and floor.



## **BEDROOM TWO 9' 1" x 11' 6" (2.79m x 3.53m)**

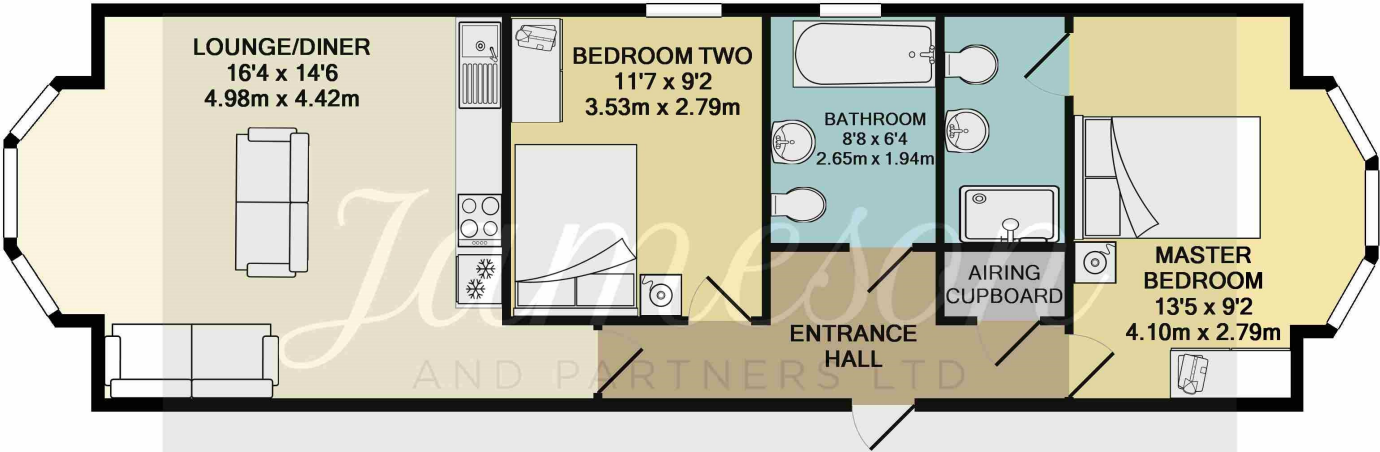
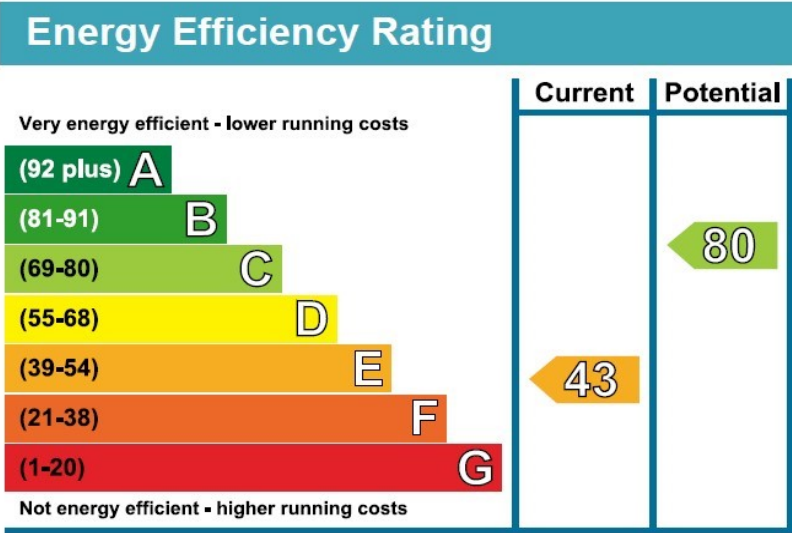
Double bedroom with laminate wood effect flooring; uPVC double glazed window to side aspect; and coming equipped with double bed, bedside table, small wardrobe and chest of draws.

BATHROOM

A modern and stylish bathroom with laminate wood flooring; fully tiled walls; uPVC double glazed frosted glass window to side aspect; panelled bath with shower over and half glazed screen; pedestal wash hand basin with frosted glass wash bowl; low-level WC; wall mounted mirror and chrome heated towel rail.

EXTERNAL

To the front of the property lies a lawned garden area enclosed by a brick wall; there are wrought iron gates allowing access to the drive which leads to the rear of the property where you will find allocated parking spaces for all residents.



TOTAL APPROX. FLOOR AREA 680 SQ.FT. (63.1 SQ.M.)

Whilst every attempt has been made to ensure the accuracy of the floor plan contained here, measurements of doors, windows, rooms and any other items are approximate and no responsibility is taken for any error, omission, or mis-statement. This plan is for illustrative purposes only and should be used as such by any prospective purchaser. The services, systems and appliances shown have not been tested and no guarantee as to their operability or efficiency can be given

Made with Metropix ©2018